

# Fermor Avenue Trail

St. Anne's Rd to Niakwa Rd E - 4.4 km

 Parking Lot

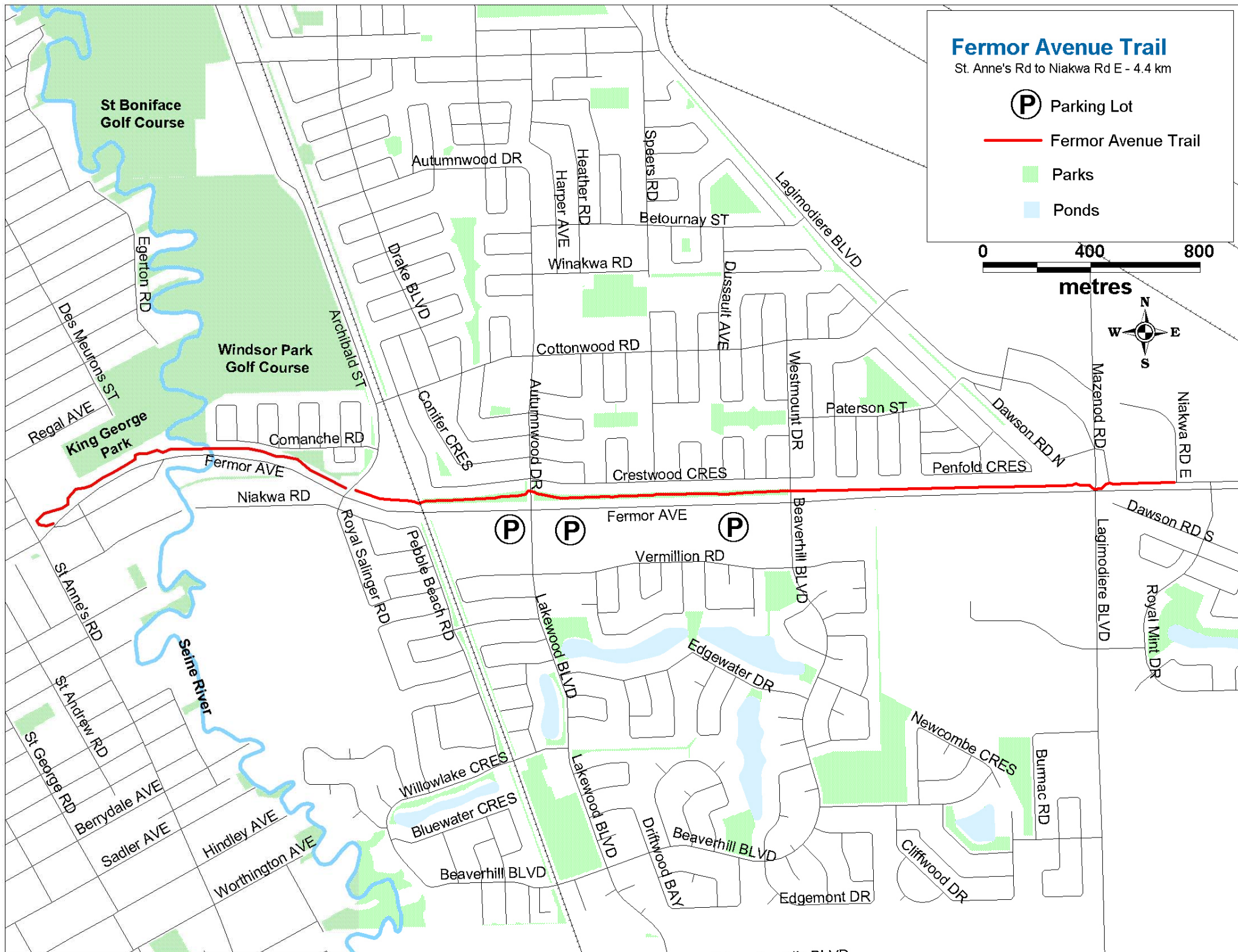
 Fermor Avenue Trail

 Parks

 Ponds

0 400 800

metres



This is an excellent linear trail connecting communities. Running alongside Fermor Ave. this is a safe route to access multiple communities.

### Fermor Trail Features

**Parking:** Multiple parking locations on neighbouring side streets.

**Asphalt Trail Distance** ~4.4 km St. Annes to Niakwa Rd.

**Surface Type:** Asphalt

**Suitable For:** Walking, cycling

**Seasons:** Open all seasons



### PHOTOS 'In Motion on the Trail'

Throughout the summer we are gathering photos of Winnipeg trails. Send in your photos and have a chance to win some great prizes!

Email photos of your trail adventures to [WinnipegTrails@shaw.ca](mailto:WinnipegTrails@shaw.ca)

Indicate the trail where the photo was taken, include your name and phone number.

Photos best representing 'In Motion on the Trail' will be entered into a draw for Sargent Sundae Ice Cream, Mountain Equipment Co-op gift certificates and a weekend at the River Gate Inn Bed & Breakfast! Draws to be made throughout the summer.

