

WHITESHELL RIVER BRIDGE

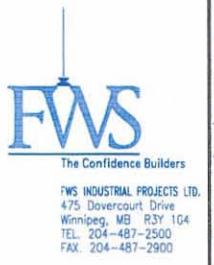
NOTE:
THIS DRAWING IS THE PROPERTY OF FWS INDUSTRIAL PROJECTS LTD.
IT IS NOT TO BE DUPLICATED, IN WHOLE OR IN PART, OR DISTRIBUTED
WITHOUT THE WRITTEN PERMISSION OF FWS INDUSTRIAL PROJECTS LTD.

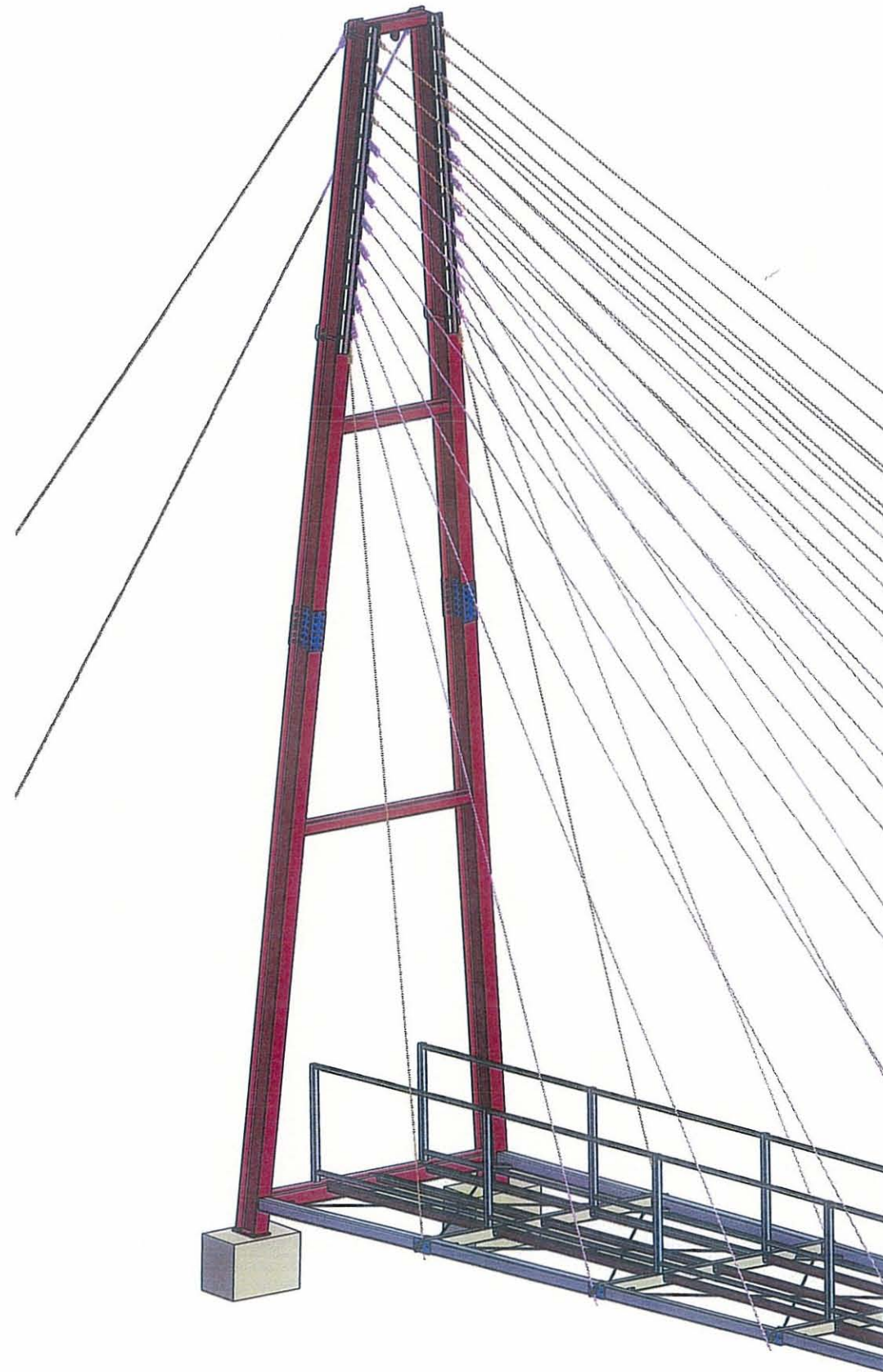
REV	BY	DATE	DESCRIPTION	D/D	MGR	P	ENG	P	MGR
A	JC	01/27/10	ISSUED FOR REVIEW						

DISTRIBUTION	COPIES	DATE
CLIENT		
PROJ. MGR.		
FIELD		
E-MAIL		
PURCHASING		
ENGINEERING		

APCMT
Certificate of Authorization
FWS Industrial Projects Ltd.
No. 4544 Date: _____

TITLE	WHITESHELL RIVER BRIDGE ISOMETRIC VIEW OF PROPOSED BRIDGE	DRAWN BY	JC
CLIENT	MANITOBA RECREATIONAL TRAILS ASSOCIATION	DATE	JANUARY 2010
LOCATION	WHITESHELL PROV. PARK @ NUTMIK LAKE	SCALE	N.T.S.
		JOB NO.	12-08-0009
		ENG NO.	G003
			A





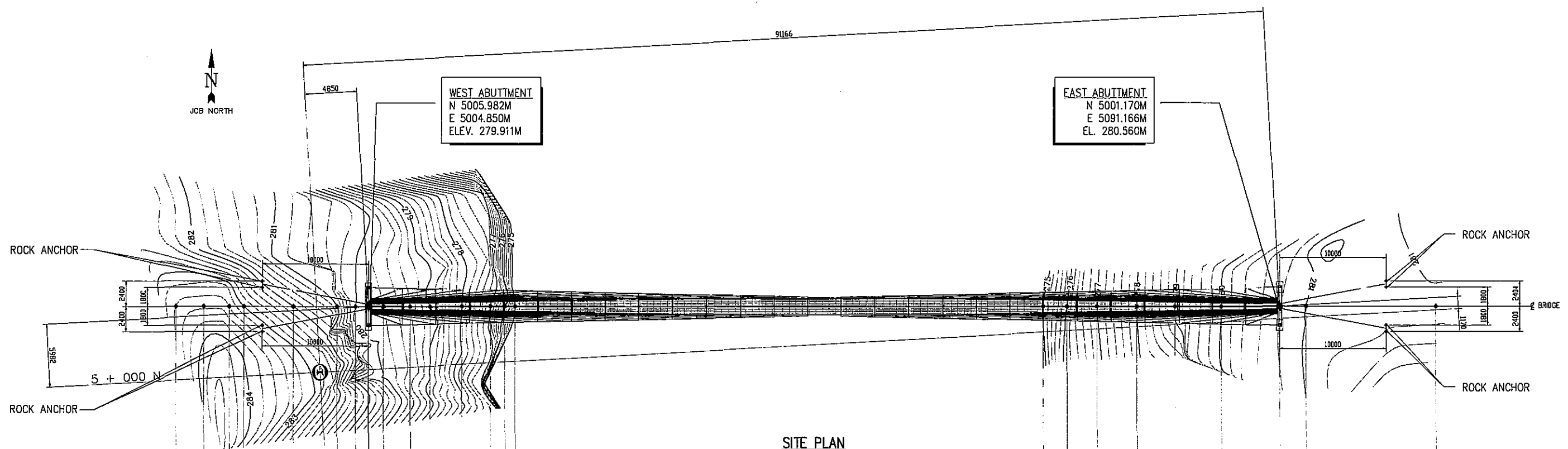
NOTE:
THIS DRAWING IS THE PROPERTY OF FWS INDUSTRIAL PROJECTS LTD.
IT IS NOT TO BE DUPLICATED, IN WHOLE OR IN PART, OR DISTRIBUTED
WITHOUT THE WRITTEN PERMISSION OF FWS INDUSTRIAL PROJECTS LTD.

REV	BY	DATE	DESCRIPTION	D/O	MGR	P. ENG	P. MGR	DISTRIBUTION	COPIES	DATE
A	JC	01/27/10	ISSUED FOR REVIEW							
								CLIENT		
								PROJ. MGR.		
								FIELD		
								E-MAIL		
								PURCHASING		
								ENGINEERING		

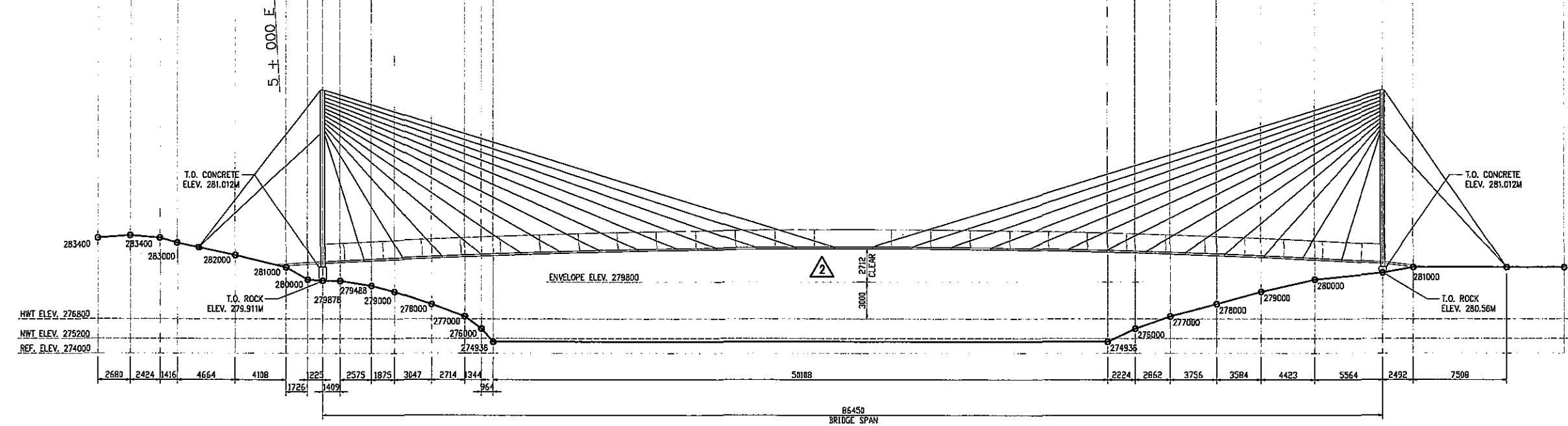
APCM
Certificate of Authorization
FWS Industrial Projects Ltd.
No. 4544 Date: _____

TITLE	WHITESHELL RIVER BRIDGE ISOMETRIC VIEW OF BRIDGE TOWER (WEST TOWER SHOWN)	DRAWN BY	JC
CLIENT	MANITOBA RECREATIONAL TRAILS ASSOCIATION	DATE	JANUARY 2010
LOCATION	WHITESHELL PROV. PARK @ NUTIMIK LAKE	SCALE	N.T.S.
		JOB NO.	12-08-0009
		REV. NO.	X003
			A





SITE PLAN
SCALE: 1=400



SECTION ALONG CENTERLINE OF PROPOSED BRIDGEPLAN VIEW
SCALE: 1=400

REFERENCE DRAWINGS:
WRB0001 AND WRB0004

READ THIS DRAWING WITH DRAWINGS NUMBERED:
12-08-0009C001 TO C002 PLAN AND ELEVATIONS (INCL)
12-08-0009C001 TO C002 FOOTING DETAILS (INCL)

NOTE:
THIS DRAWING IS THE PROPERTY OF FWS INDUSTRIAL PROJECTS LTD.
IT IS NOT TO BE DUPLICATED, IN WHOLE OR IN PART, OR DISTRIBUTED
WITHOUT THE WRITTEN PERMISSION OF FWS INDUSTRIAL PROJECTS LTD.

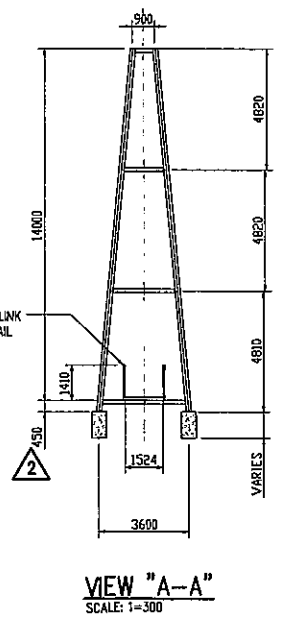
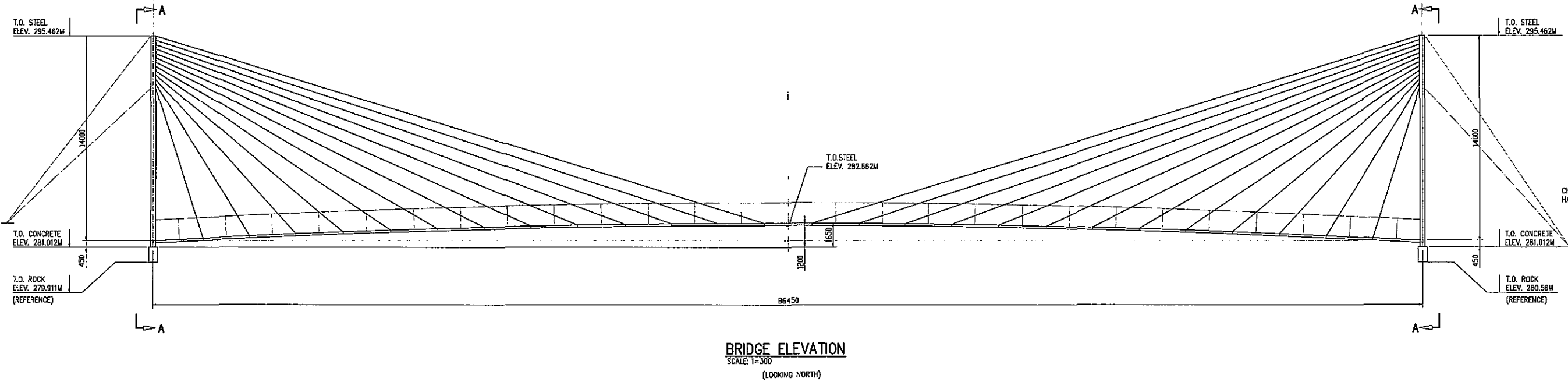
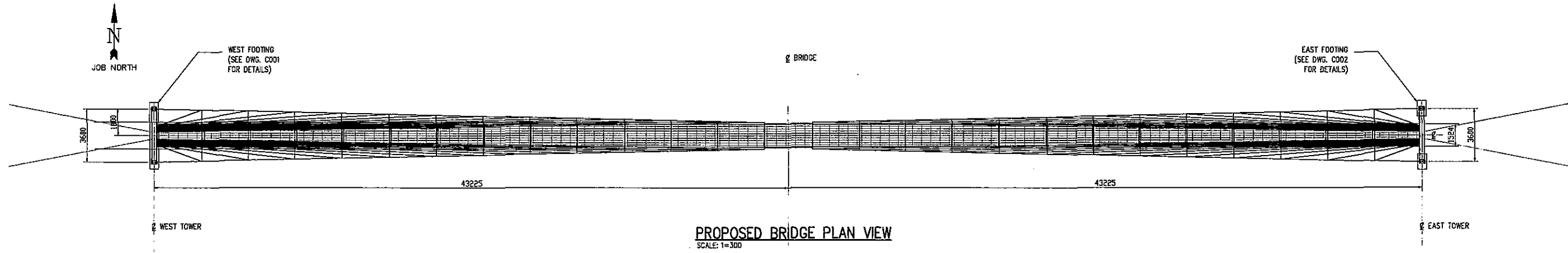
REV	BY	DATE	DESCRIPTION	DATE	COPIES	DISTRIBUTION
2	JC	01/27/10	SHOWED CENTER BRIDGE BOTTOM CLEARANCE			
1	JC	01/22/10	ISSUED FOR CONSTRUCTION			

PEGM
Certificate of Authorization
FWS Industrial Projects Ltd.
No. 4544 Date: _____

TITLE	WHITESHELL RIVER BRIDGE SITE PLAN AND SECTION	DRAWN BY	JC
CLIENT	MANITOBA RECREATIONAL TRAILS ASSOCIATION	DATE	JANUARY 2010
LOCATION	WHITESHELL PROV. PARK @ NUTMIK LAKE	SCALE	AS SHOWN
		JOB NO	12-08-0009
		DWG NO	G001
			2

FWS
The Confidence Builders
FWS INDUSTRIAL PROJECTS LTD.
475 DAVENPORT DRIVE
WINNIPEG, MB R3Y 1G4
TEL. 204-487-2500
FAX. 204-487-2900

M:\Eng\Jobs\FWS Industrial Projects Ltd\2000's\NEW\12-08-0009 Whiteshell River Bridge\12-08-0009C001R2.dwg\G001R2 01/27/2010 15:27



READ THIS DRAWING WITH DRAWINGS NUMBERED:
 12-08-0009G001 TO G002 PLAN AND ELEVATIONS (INCL.)
 12-08-0009C001 TO C002 FOOTING DETAILS (INCL.)

NOTE:
 THIS DRAWING IS THE PROPERTY OF FWS INDUSTRIAL PROJECTS LTD.
 IT IS NOT TO BE DUPLICATED, IN WHOLE OR IN PART, OR DISTRIBUTED
 WITHOUT THE WRITTEN PERMISSION OF FWS INDUSTRIAL PROJECTS LTD.

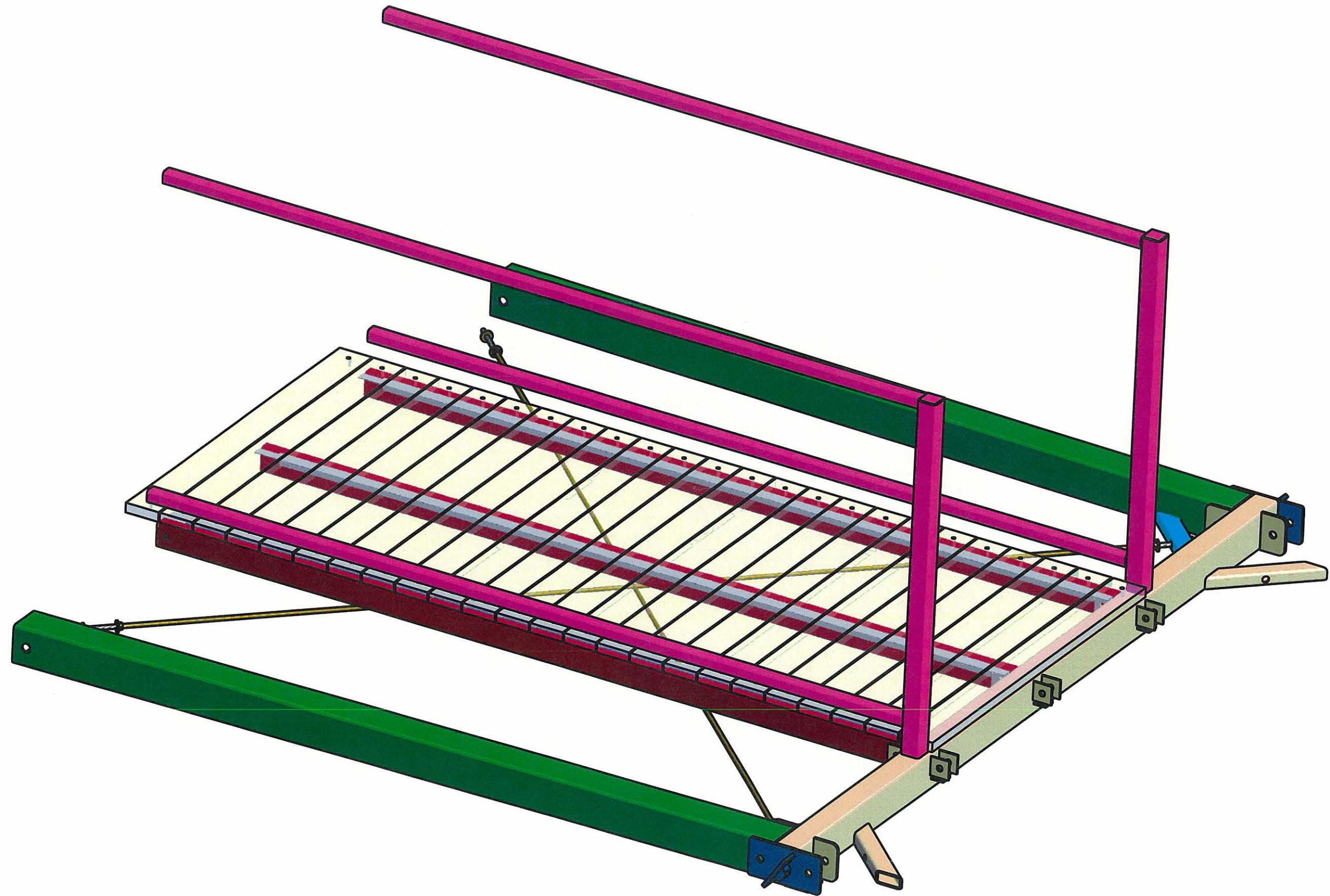
NO.	BY	DATE	DESCRIPTION	DISTRIBUTION	COPIES	DATE
2	JC	01/25/10	REVISED DIMENSION AS MARKED	CLIENT		
1	JC	01/22/10	ISSUED FOR CONSTRUCTION	PROJ. MGR.		
				FIELD		
				E-MAIL		
				PURCHASING		
				ENGINEERING		



TITLE	WHITESHELL RIVER BRIDGE BRIDGE PLAN VIEW AND ELEVATION	DRAWN BY	JC
CLIENT	MANITOBA RECREATIONAL TRAILS ASSOCIATION	DATE	JANUARY 2010
LOCATION	WHITESHELL PROV. PARK @ NUTMIK LAKE	SCALE	AS SHOWN
		JOB NO.	12-08-0009
		DWG NO.	G002 2

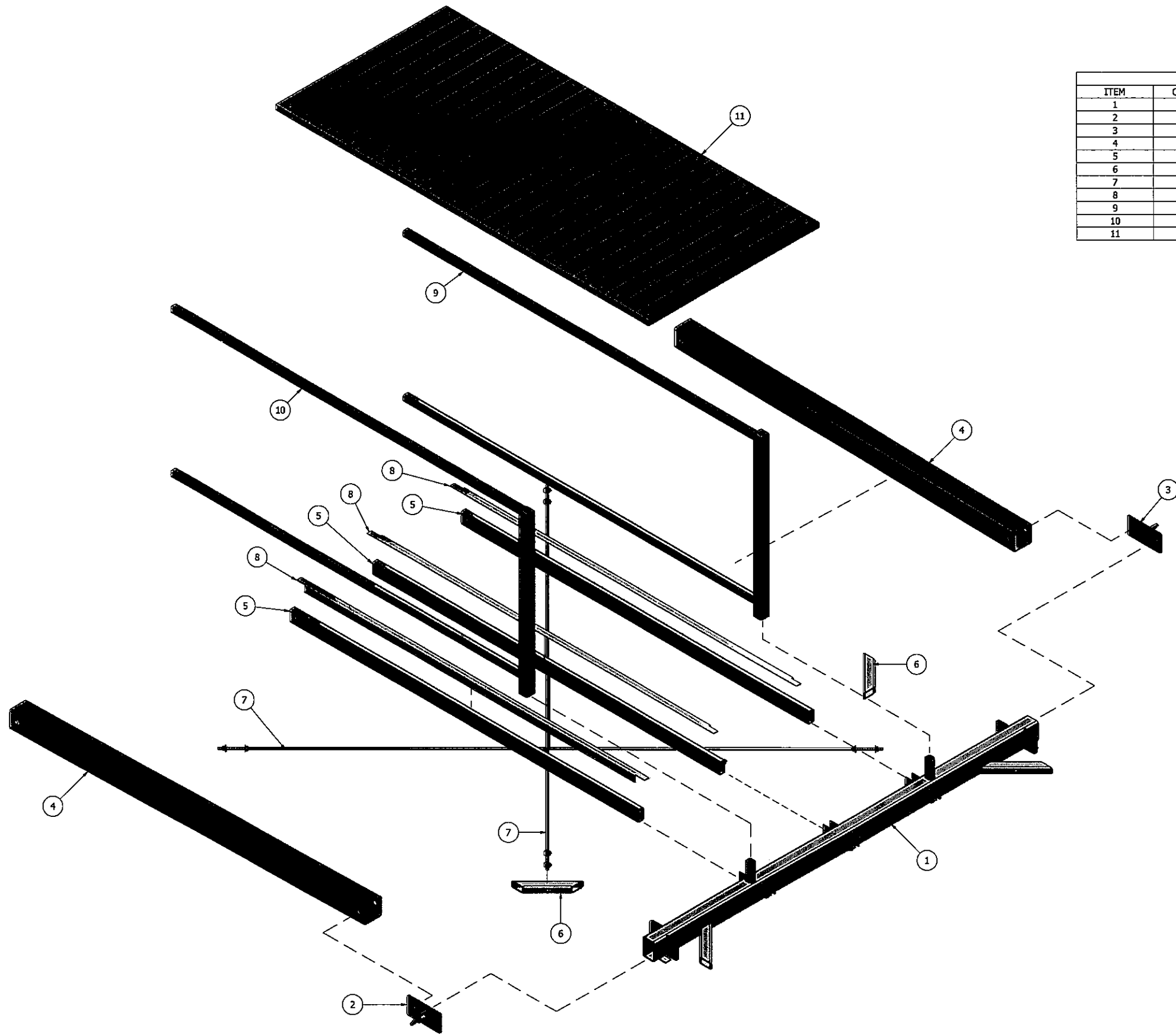


M:\Eng\Jobs\FWS Industrial Projects Ltd\2000's_NEW\12-08-0009 Whiteshell River Bridge\12-08-0009G002R2.dwg\5002R2 01/25/2010 09:13



ISOMETRIC VIEW OF TYPICAL DECK PANEL

PARTS LIST		
ITEM	QTY	PART NUMBER
1	1	P2-FR1 Assembly
2	1	P1-CPR
3	1	P1-CPL
4	2	P2-BM2-HSS6x6
5	3	PXBM1-HSS4x2
6	2	RS1
7	2	P2 Stiffener Rod
8	3	FR2-L2x2
9	1	FA1-Fence Assembly
10	1	FA2-Fence Assembly
11	1	Walkway Assembly



EXPLODED VIEW OF TYPICAL DECK PANEL